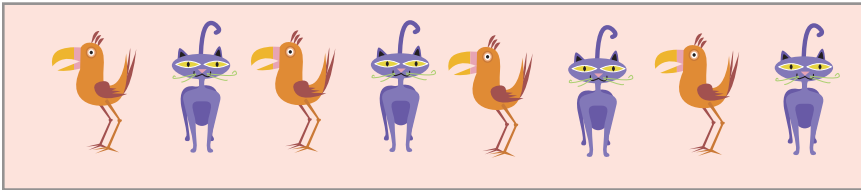


Name : Class :

Patterns

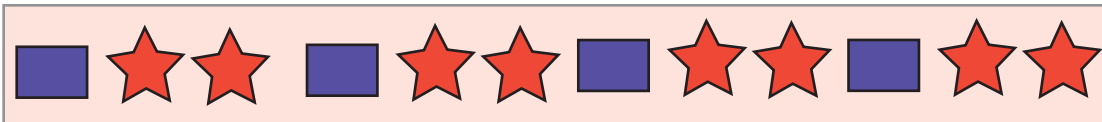
1. Write the pattern below in terms of 'A' and 'B' and in terms of '1' and '2' ?



Assume that is = 'A' or '1'

Assume that is = 'B' or '2'

1. Write the pattern below in terms of 'A' and 'B' and in terms of '1' and '2' ?

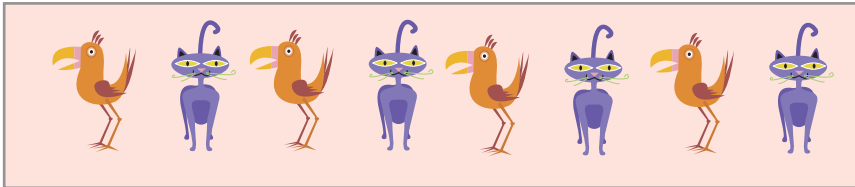


Assume that is = 'A' or '1'

Assume that is = 'B' or '2'

Answers

1. Write the pattern below in terms of 'A' and 'B' and in terms of '1' and '2' ?



AB AB AB ABAB

12 12 12 12 1212

Assume that  is = 'A' or '1'

Assume that  is = 'B' or '2'

1. Write the pattern below in terms of 'A' and 'B' and in terms of '1' and '2' ?

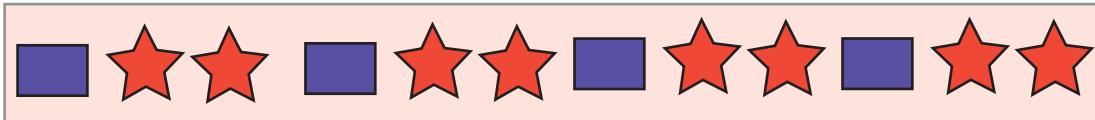


ABB ABB ABBABB

122 122 122 122

Assume that  is = 'A' or '1'

Assume that  is = 'B' or '2'